

## Welcome Phase V EBDM Teams

Lori Eville  
National Institute of Corrections

June 29, 2015  
Green Lake, Wisconsin

## EBDM Pilot Site Teams


### Transformative Leaders

*changing the DNA of the justice system*

## EBDM Phase II/Phase III Pilot Sites

- Sites selected through a national competition
- TA provided from September 2011-December 2013
  - 10 months planning
  - 12 months implementation
- Through the Phase II planning process (equivalent to Phase V), teams
  - Developed consensus on their vision & values for their systems
  - Gathered information about their systems
    - System mapping
    - Baseline data
    - Policy & practice analysis
- By consensus, identified key "change targets"
- In Phase III, teams implemented these change targets
  - Comparative data now becoming available

## Mesa County



## Mesa County: Basic Demographics

- Population: 148,255
- Median household income: \$49,471
- Percent persons below poverty level: 14.7%
- Land area in square miles: 3,328

## Mesa County & the 21<sup>st</sup> Judicial District

- Key change targets:
  - Pretrial practices
  - Use of the Hawai'i proxy at arrest and in prosecutorial decisions with misdemeanants
  - Evidence-based "Cog Court"
  - Redesign of pre-sentence investigation report to focus on risk and need information
  - Development of sentencing guide

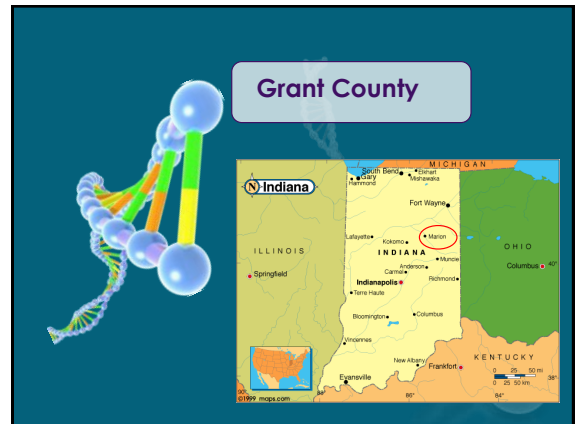
Recent winner of National Association of Counties (NACo) Innovation Award for Evidence-Based Pretrial Initiative

*"In just the past two years, Mesa County stakeholders have accomplished what many jurisdictions have taken many years to do or have not been able to do at all."*

Recent winner of MacArthur Foundation Public Safety Challenge Grant

### Spotlight on Key Impacts - Pretrial Practices

- ✓ Changed judicial decision making practices regarding releasing defendants on personal recognizance vs. with cash/surety bonds
- ✓ Lower risk defendants now released at significantly higher rates than higher risk
  - ✓ Detained population = 75% high risk, 25% low risk
- ✓ Jail's pretrial population decreased 27% since July 2013
  - ✓ Community supervision of pretrial defendants increased by 24%
- ✓ Other key outcomes
  - ✓ Rate of release without money conditions has doubled
  - ✓ FTA's reduced by over 50%
  - ✓ Fewer defendants held based on ability to pay
  - ✓ Rate of public safety has not been affected, and is showing signs of improvement.



### Grant County: Basic Demographics

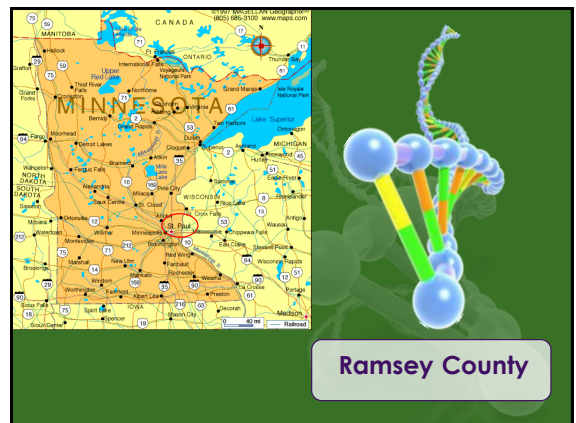
- Population: 68,569
- Median household income: \$39,747
- Percent persons below poverty level: 18.6%
- Land area in square miles: 414

### Grant County

- Working for over a decade to implement EBP in probation, community corrections, Drug Court and Reentry Court
- Through EBDM, building on that foundation in the areas of:
  - Pretrial
  - Accelerated case processing
  - Caseload re-allocation
  - Probation violations and rewards response strategies

### Spotlight on Key Impacts

- 2011 probation study revealed that
  - 77% successfully complete probation supervision
  - 13% get arrested within 1 year after supervision
  - 30% within 2 years
- Annual volume of jail bookings is dropping (3,848 in 2008; 3,225 in 2014)
- Total jail population remains stable, with ADP of 232 in the last 5 years
- Fewer pretrial inmates today than 5 years ago (down 15%)
- LOS is up due to longer stays for sentenced inmates (reflects a shift in practice to prioritize the use of jail for sanctions and violations)



## Ramsey County: Basic Demographics

- Population: 532,655
- Median household income: \$54,247
- Percent persons below poverty level: 16.9%
- Land area in square miles: 152

## Ramsey County

- Key change targets:
  - Reduce the number of outstanding warrants through internet notification and other law enforcement mechanisms
  - Reduce the impact of probation, parole and pretrial violations on the criminal justice system through the use of structured sanctions
  - Divert low level misdemeanor offenses (criminal trespass, criminal damage to property, theft, visiting or operating a disorderly house) from regular court process.

## Spotlight on Key Impacts—Reduce the Impact of Violations on the Criminal Justice System

- Probation and parole violation warrants decreased by 11%
- Number of court appearances for violators decreased by 17%
- Number of jail bed days used decreased by 15%
- Number of offenders incarcerated for violations decreased by 6%



## Yamhill County: Basic Demographics

- Population: 101,758
- Median household income: \$54,535
- Percent persons below poverty level: 14.6%
- Land area in square miles: 716

## Yamhill County

- Statewide leaders in EBP
  - First state in the country to legislate EBP programs and services
  - Formal process for ensuring fidelity of state funded corrections
  - Developed static risk tool for statewide judicial decision making
- Expanding EBP across the justice system
  - Evidence-based pretrial practices
  - Use of risk/need assessments at sentencing
  - Use of risk/need assessments to guide post-conviction programming and supervision





## Eau Claire County

## Eau Claire County: Basic Demographics

- Population: 101,567
- Median household income: \$48,090
- Percent persons below poverty level: 15.7%
- Land area in square miles: 638

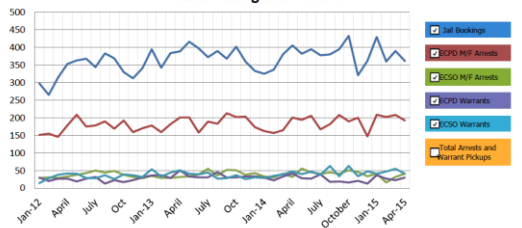
## Eau Claire County

- Systematic realignment of five key processes
  - Universal use of assessment tools
    - Hawai'i proxy to guide arrest/detain decision
    - COMPAS to guide sentencing and treatment/alternative placements
  - Evidence-based charging processes
  - Realignment of pretrial release and custodial arrest practices
  - Evidence-based sentencing
  - Evidence-based supervision practices

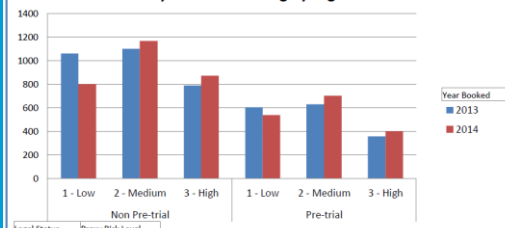
## Spotlight on Key Impacts – Pre-Charge Diversion

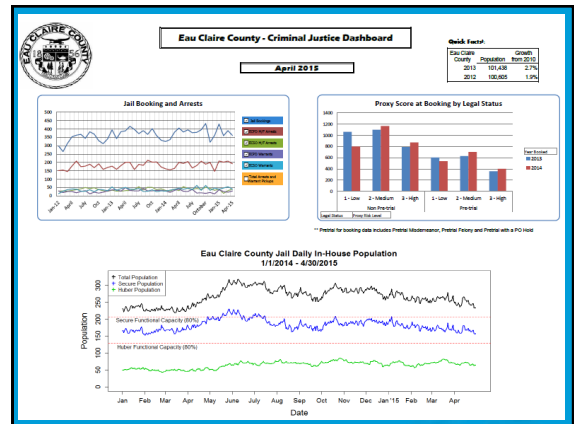
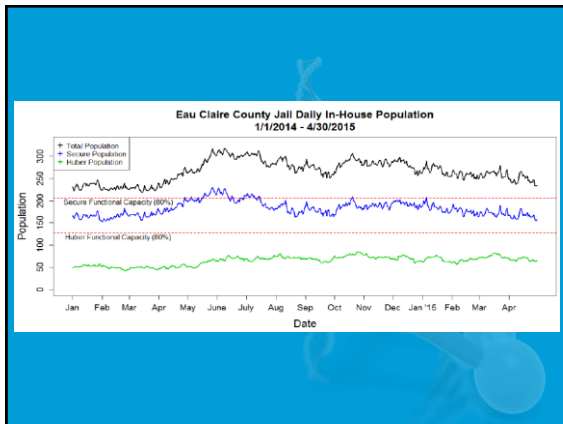
- ✓ Low risk individuals who meet certain criteria are diverted from the justice system.
- ✓ Victims are consulted and must consent to the individual's participation in the pre-charge diversion program.
- ✓ 800 individuals have been handled through the pre-charge diversion program to date.
- ✓ \$15,000 in restitution has been collected and distributed to victims.
- ✓ Since establishing this program, the jail population has decreased.
- ✓ Felony case filings have increased (in 2014, the District Attorney's Office closed nearly 200 more felony cases than in 2013, and nearly 400 more criminal cases than in 2012). The DA reports prosecutors, judges and others have more time to concentrate on more serious crimes as a result of the diversion of low risk first-time offenders.
- ✓ The recidivism rate of pre-charge diversion participants was 13.3% compared to a 25.8% recidivism rate among a control group. (This study defines recidivism as a subsequent misdemeanor or felony charge or any citation that could otherwise have a criminal penalty, within a 12 month follow-up period.)

Jail Booking and Arrests

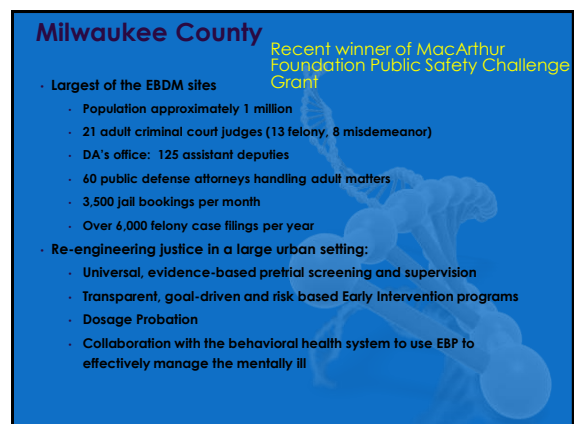
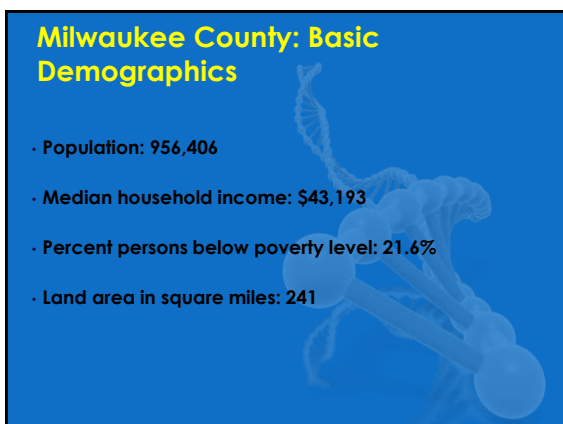


Proxy Score at Booking by Legal Status





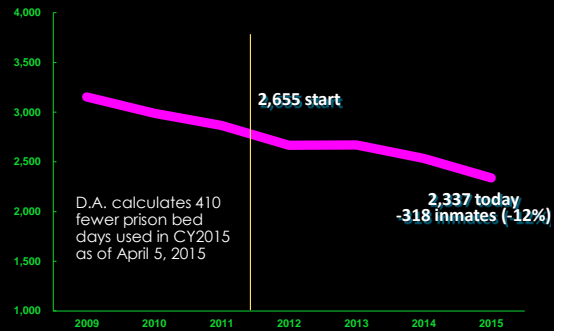
SUGGESTED OFFICER RESPONSE FOR ARRESTEES WITH LOW, MEDIUM AND HIGH RISK PROBITY SCORES		
RISK LEVEL	VIOLATIONS/CRIMINAL BEHAVIOR CRITERIA TO CONSIDER	SUGGESTED RESPONSE
LOW RISK	<ul style="list-style-type: none"> <li>Chronic violations that result in a citation (Bicycle conduct, retail theft)</li> <li>All criminal arrests</li> </ul>	<ol style="list-style-type: none"> <li>No arrest required based on facts of case.</li> <li>Refer to District Attorney if appropriate.</li> <li>Refer to Probation and Parole Agent if appropriate.</li> <li>Dismiss (FBI and diversion fees).</li> <li>Issue a criminal offense citation and release.</li> <li>Arrest and order into court.</li> <li>Arrest and grant a release from jail.</li> <li>Arrest and hold in jail until next available court date.</li> </ol> <p>To New County release on release conditions, consider release on release conditions (release, cash, etc.) to community, and release (see court etc.)</p>
MEDIUM RISK	<ul style="list-style-type: none"> <li>They have a valid Wisconsin driver's license or can show sufficient evidence of ties to the community.</li> <li>The arresting officer is otherwise satisfied that the arrest will make sense court appearance.</li> </ul>	<ol style="list-style-type: none"> <li>No arrest required based on facts of case.</li> <li>Refer to District Attorney if appropriate.</li> <li>Dismiss (FBI and diversion fees).</li> <li>Issue a criminal offense citation and release.</li> <li>Arrest and order into court.</li> <li>Arrest and grant a release.</li> <li>Arrest and hold until next available court date.</li> </ol> <p>As a consideration, consider release on release conditions (release, cash, etc.) to community, and release (see court etc.)</p>
HIGH RISK	<ul style="list-style-type: none"> <li>More history violations</li> <li>Domestic Abuse related violations</li> <li>The accused does not have proper identification</li> <li>The accused appears to represent a danger of harm to himself or herself, another person or property</li> <li>The accused cannot show sufficient evidence of ties to the community</li> <li>The accused has previously failed to appear in court or failed to respond to a citation</li> <li>Arrest or further detention is necessary to carry out legitimate law enforcement actions in accordance with law enforcement agency policy.</li> </ul>	<ol style="list-style-type: none"> <li>No arrest required based on facts of case.</li> <li>Refer to the District Attorney's Office for charging considerations.</li> <li>Arrest and grant a release.</li> <li>Arrest and hold in jail until next available court date.</li> </ol> <p>To New County release on release conditions, consider release on release conditions (release, cash, etc.) to community, and release (see court etc.)</p>



### Spotlight on Key Impacts – Early Intervention

- ✓ Universal screening of all defendants
- ✓ Qualified individuals placed in one of two tracks
  - ✓ Diversion = assessed as low recidivism risk
  - ✓ Deferred prosecution = assessed as moderate recidivism risk
- ✓ Since February 2014
  - ✓ 400 diversion cases
  - ✓ 200 deferred prosecution cases
- ✓ Program success rates
  - ✓ 80% for diversion
  - ✓ 83% for deferred prosecution

### Milwaukee Jail Population (June 1<sup>st</sup>, 2009-2015)



"Transformative leaders are willing to be challenged, ready to step outside of the norm, unafraid to address the wicked problems others are all too willing to live with. They are also willing to stumble—and to be observed in the act—for the sake of achieving what most consider to be the impossible."

Morris Thigpen  
Director, National Institute of Corrections  
February 21, 2012  
Aurora, Colorado

*We are anxious to observe your efforts as you work to define and achieve your vision of justice for your community!*

*Victim*

*Dollar misspent*

**One Less** *Officer injured*®

A STRATEGY FOR SAFER COMMUNITIES