

DATA TREND SERIES

Demographic Trends in Prison Admissions (2005 - 2014)



August 2015

**Office of the Secretary
Research and Policy Unit**

Inquiries regarding this report may be directed to author:

Joseph R. Tatar II, Ph.D.

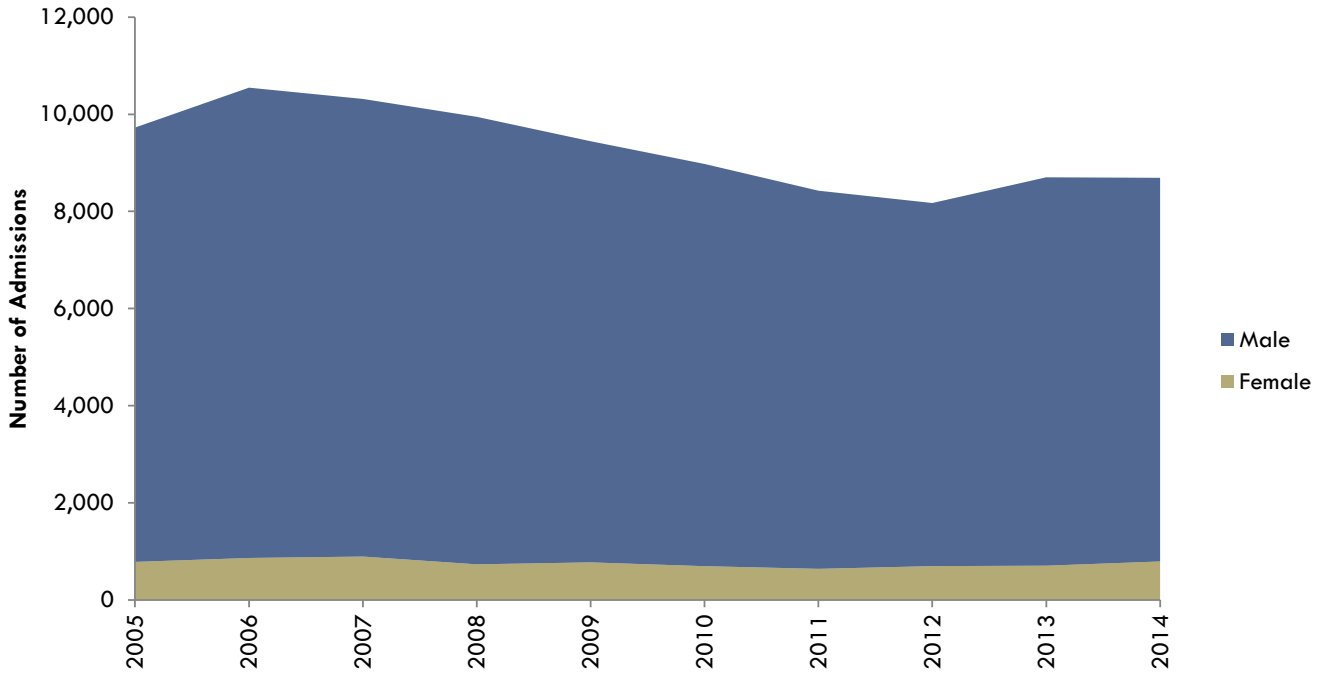
(608) 240-5814

Joseph.Tatar@wisconsin.gov

State of Wisconsin
Department of Corrections

Demographic Trends in Prison Admissions

Gender



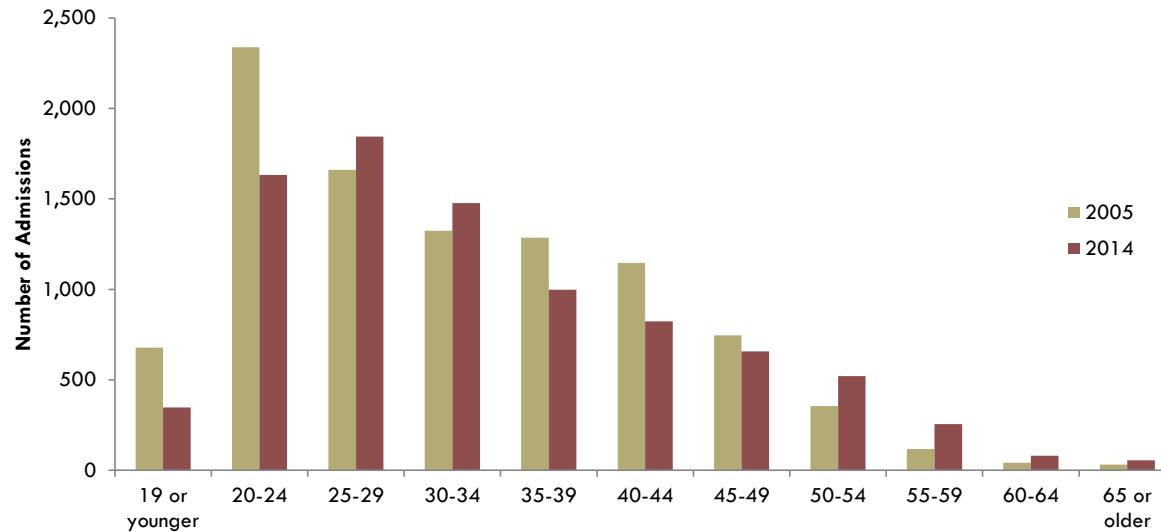
Note: Admission numbers exclude temporary holds

Table 1. Prison Admissions by Gender (2005 – 2014)

Admission Year	Total Admissions		Male		Female	
	N	N	%	N	%	
2005	9,726	8,943	91.9%	783	8.1%	
2006	10,547	9,683	91.8%	864	8.2%	
2007	10,315	9,422	91.3%	893	8.7%	
2008	9,946	9,213	92.6%	733	7.4%	
2009	9,444	8,671	91.8%	773	8.2%	
2010	8,976	8,281	92.3%	695	7.7%	
2011	8,426	7,786	92.4%	640	7.6%	
2012	8,172	7,476	91.5%	696	8.5%	
2013	8,701	7,996	91.9%	705	8.1%	
2014	8,691	7,899	90.9%	792	9.1%	

Note: Admission numbers exclude temporary holds.

Age at Admission



Note: Admission numbers exclude temporary holds

Table 2. Prison Admissions by Age (2005 – 2014)

Admission Year	19 or younger		20-24		25-29		30-34		35-39		40-44		45-49		50-54		55-59		60-64		65 or older	
	N	%	N	%	N	%	N	%	N	%	N	%	N	%	N	%	N	%	N	%	N	%
2005	678	7.0%	2,338	24.0%	1,661	17.1%	1,324	13.6%	1,286	13.2%	1,147	11.8%	746	7.7%	354	3.6%	118	1.2%	42	0.4%	32	0.3%
2006	609	5.8%	2,355	22.3%	2,018	19.1%	1,470	13.9%	1,350	12.8%	1,257	11.9%	848	8.0%	408	3.9%	132	1.3%	66	0.6%	34	0.3%
2007	611	5.9%	2,186	21.2%	1,963	19.0%	1,432	13.9%	1,316	12.8%	1,201	11.6%	904	8.8%	432	4.2%	162	1.6%	64	0.6%	44	0.4%
2008	608	6.1%	2,044	20.6%	2,004	20.1%	1,361	13.7%	1,243	12.5%	1,104	11.1%	867	8.7%	424	4.3%	194	2.0%	55	0.6%	42	0.4%
2009	519	5.5%	1,926	20.4%	1,919	20.3%	1,331	14.1%	1,140	12.1%	1,027	10.9%	846	9.0%	442	4.7%	193	2.0%	64	0.7%	37	0.4%
2010	496	5.5%	1,890	21.1%	1,821	20.3%	1,249	13.9%	994	11.1%	965	10.8%	781	8.7%	450	5.0%	211	2.4%	70	0.8%	49	0.5%
2011	495	5.9%	1,781	21.1%	1,606	19.1%	1,306	15.5%	918	10.9%	856	10.2%	693	8.2%	473	5.6%	182	2.2%	74	0.9%	42	0.5%
2012	439	5.4%	1,646	20.1%	1,581	19.3%	1,288	15.8%	943	11.5%	793	9.7%	671	8.2%	477	5.8%	200	2.4%	82	1.0%	52	0.6%
2013	438	5.0%	1,696	19.5%	1,780	20.5%	1,450	16.7%	924	10.6%	836	9.6%	689	7.9%	488	5.6%	252	2.9%	94	1.1%	54	0.6%
2014	347	4.0%	1,633	18.8%	1,845	21.2%	1,477	17.0%	998	11.5%	823	9.5%	657	7.6%	520	6.0%	255	2.9%	81	0.9%	55	0.6%

Note: Admission numbers exclude temporary holds.

Race

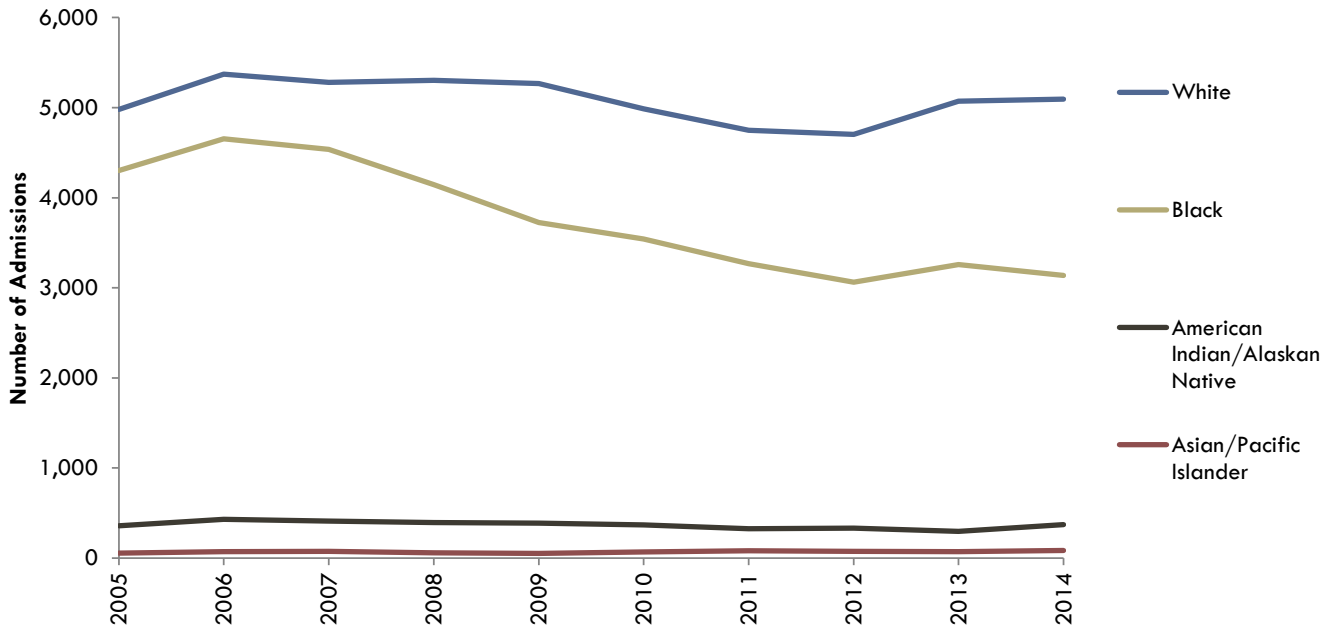


Table 3. Admissions by Race

Admission Year	Black		White		American Indian/Alaskan Native		Asian/Pacific Islander		Did Not Report	
	N	%	N	%	N	%	N	%	N	%
2005	4,301	44.2%	4,981	51.2%	358	3.7%	55	0.6%	31	0.3%
2006	4,655	44.1%	5,372	50.9%	431	4.1%	71	0.7%	18	0.2%
2007	4,537	44.0%	5,282	51.2%	410	4.0%	75	0.7%	11	0.1%
2008	4,146	41.7%	5,303	53.3%	396	4.0%	60	0.6%	41	0.4%
2009	3,726	39.5%	5,268	55.8%	388	4.1%	52	0.6%	10	0.1%
2010	3,543	39.5%	4,986	55.5%	369	4.1%	67	0.7%	11	0.1%
2011	3,269	38.8%	4,748	56.3%	327	3.9%	82	1.0%	0	0.0%
2012	3,062	37.5%	4,704	57.6%	332	4.1%	74	0.9%	0	0.0%
2013	3,257	37.4%	5,072	58.3%	295	3.4%	72	0.8%	5	0.1%
2014	3,138	36.1%	5,096	58.6%	370	4.3%	86	1.0%	1	0.0%

Note: Admission numbers exclude temporary holds. Identification as Hispanic or Latino is an ethnicity, separate from race. There may be a number of offenders in each race category that also identify as Hispanic or Latino. Ethnicity trends are not presented here but can be found in other DOC reporting.

Demographic Trends in Prison Admissions by Most Serious Crime Category

Most Serious Crime Category by Gender



Note: Admission numbers exclude temporary holds and 'Other' admission types. Male and female trends are not on the same scale

Table 4. Most Serious Crime Type – Male Prison Admissions

Admission Year	Violent Crime		Property		Drug Offense		Public Order Offense	
	N	%	N	%	N	%	N	%
2005	2,683	37.7%	1,814	25.5%	1,531	21.5%	1,080	15.2%
2006	3,054	39.4%	1,861	24.0%	1,591	20.5%	1,251	16.1%
2007	3,246	39.8%	1,832	22.4%	1,721	21.1%	1,367	16.7%
2008	3,324	41.0%	1,800	22.2%	1,552	19.2%	1,422	17.6%
2009	3,290	42.2%	1,784	22.9%	1,363	17.5%	1,368	17.5%
2010	3,163	41.5%	1,628	21.4%	1,435	18.8%	1,398	18.3%
2011	3,175	44.2%	1,568	21.8%	1,179	16.4%	1,262	17.6%
2012	2,953	42.9%	1,576	22.9%	1,146	16.6%	1,215	17.6%
2013	3,104	43.5%	1,606	22.5%	1,151	16.1%	1,271	17.8%
2014	2,944	42.2%	1,566	22.4%	1,167	16.7%	1,306	18.7%

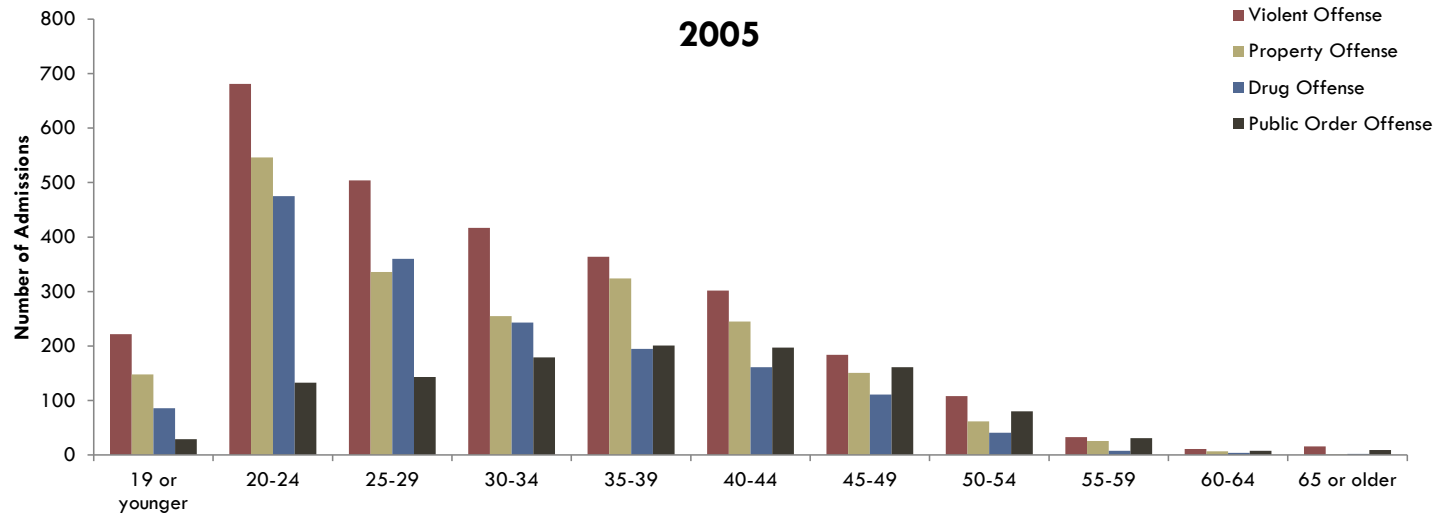
Note: Admission numbers exclude temporary holds and 'Other' admission types.

Table 5. Most Serious Crime Type – Female Prison Admissions

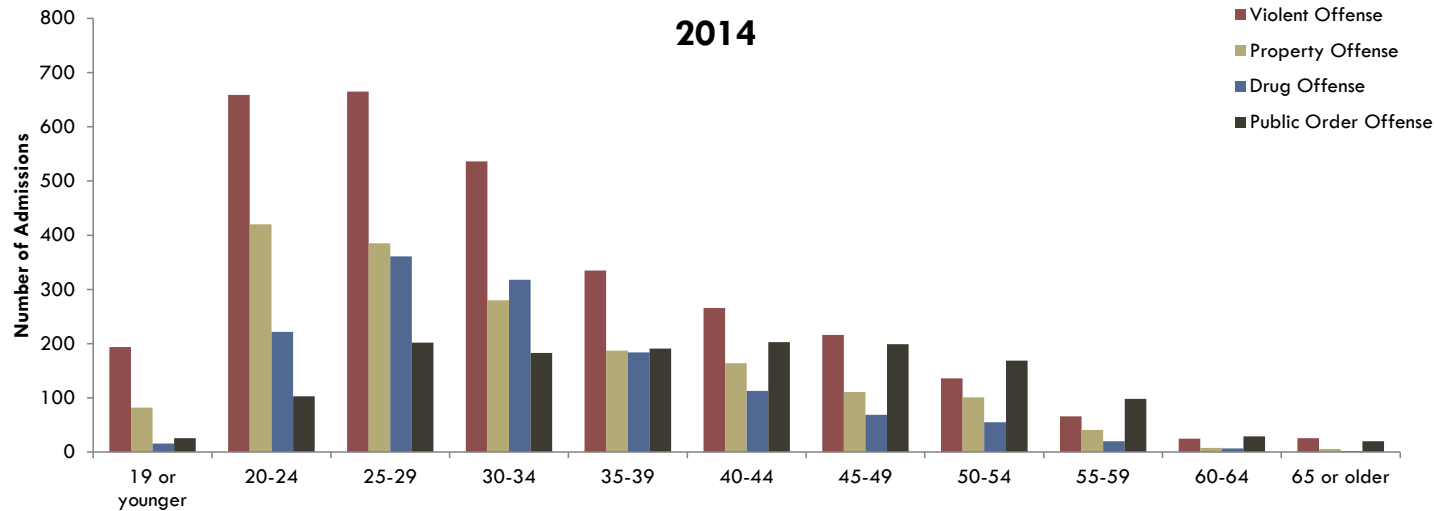
Admission Year	Violent Crime		Property		Drug Offense		Public Order Offense	
	N	%	N	%	N	%	N	%
2005	159	23.0%	287	41.5%	155	22.4%	91	13.2%
2006	187	24.7%	319	42.1%	172	22.7%	80	10.6%
2007	207	27.1%	288	37.6%	163	21.3%	107	14.0%
2008	153	24.5%	251	40.2%	128	20.5%	92	14.7%
2009	179	26.6%	245	36.4%	131	19.5%	118	17.5%
2010	170	27.8%	210	34.3%	134	21.9%	98	16.0%
2011	161	28.9%	194	34.8%	116	20.8%	86	15.4%
2012	169	26.4%	227	35.4%	135	21.1%	110	17.2%
2013	159	25.5%	217	34.8%	149	23.9%	98	15.7%
2014	180	25.1%	219	30.6%	200	27.9%	117	16.3%

Note: Admission numbers exclude temporary holds and 'Other' admission types.

Most Serious Crime Category by Age at Admission



Note: Admission numbers exclude temporary holds and 'Other' admission types



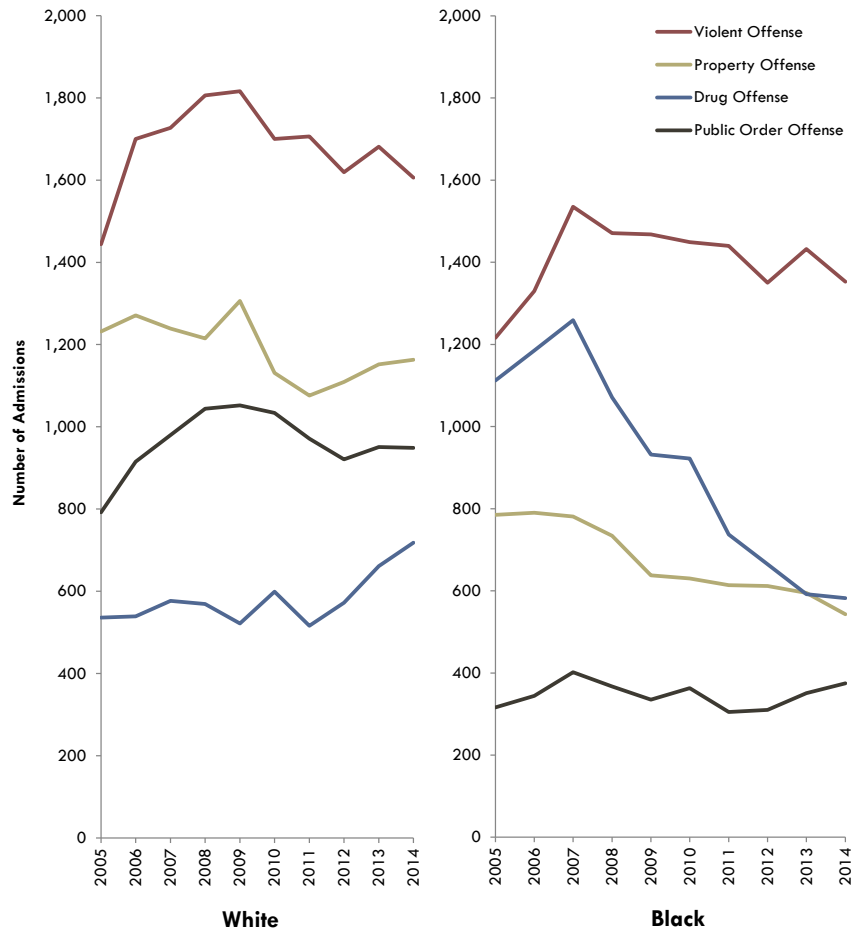
Note: Admission numbers exclude temporary holds and 'Other' admission types.

Table 6. Most Serious Crime Type – Age at Admission (2005 and 2014)

Age Category	Admission Total 2005	2005								Admission Total 2014	2014							
		Violent Offense		Property Offense		Drug Offense		Public Order Offense			Violent Offense		Property Offense		Drug Offense		Public Order Offense	
		N	%	N	%	N	%	N	%		N	%	N	%	N	%	N	%
19 or younger	485	222	45.8%	148	30.5%	86	17.7%	29	6.0%	318	194	61.0%	82	25.8%	16	5.0%	26	8.2%
20-24	1,835	681	37.1%	546	29.8%	475	25.9%	133	7.2%	1,404	659	46.9%	420	29.9%	222	15.8%	103	7.3%
25-29	1,343	504	37.5%	336	25.0%	360	26.8%	143	10.6%	1,613	665	41.2%	385	23.9%	361	22.4%	202	12.5%
30-34	1,094	417	38.1%	255	23.3%	243	22.2%	179	16.4%	1,317	536	40.7%	280	21.3%	318	24.1%	183	13.9%
35-39	1,084	364	33.6%	324	29.9%	195	18.0%	201	18.5%	897	335	37.3%	187	20.8%	184	20.5%	191	21.3%
40-44	905	302	33.4%	245	27.1%	161	17.8%	197	21.8%	746	266	35.7%	164	22.0%	113	15.1%	203	27.2%
45-49	607	184	30.3%	151	24.9%	111	18.3%	161	26.5%	595	216	36.3%	111	18.7%	69	11.6%	199	33.4%
50-54	291	108	37.1%	62	21.3%	41	14.1%	80	27.5%	461	136	29.5%	101	21.9%	55	11.9%	169	36.7%
55-59	98	33	33.7%	26	26.5%	8	8.2%	31	31.6%	225	66	29.3%	41	18.2%	20	8.9%	98	43.6%
60-64	30	11	36.7%	7	23.3%	4	13.3%	8	26.7%	69	25	36.2%	8	11.6%	7	10.1%	29	42.0%
65 or older	28	16	57.1%	1	3.6%	2	7.1%	9	32.1%	54	26	48.1%	6	11.1%	2	3.7%	20	37.0%

Note: Admission numbers exclude temporary holds and 'Other' admission types.

Most Serious Crime Category by Race



Note: Admission numbers exclude temporary holds and 'Other' admission types.

Table 7. Most Serious Crime Type – White Prison Admissions

Admission Year	Violent Crime		Property		Drug Offense		Public Order Offense	
	N	%	N	%	N	%	N	%
2005	1,444	36.1%	1,232	30.8%	536	13.4%	792	19.8%
2006	1,700	38.4%	1,271	28.7%	539	12.2%	915	20.7%
2007	1,727	38.2%	1,239	27.4%	577	12.8%	980	21.7%
2008	1,806	39.0%	1,215	26.2%	569	12.3%	1,044	22.5%
2009	1,816	38.7%	1,306	27.8%	522	11.1%	1,052	22.4%
2010	1,700	38.1%	1,131	25.3%	599	13.4%	1,034	23.2%
2011	1,706	40.0%	1,076	25.2%	516	12.1%	971	22.7%
2012	1,619	38.4%	1,109	26.3%	572	13.6%	921	21.8%
2013	1,681	37.8%	1,152	25.9%	661	14.9%	951	21.4%
2014	1,606	36.2%	1,163	26.2%	718	16.2%	949	21.4%

Note: Admission numbers exclude temporary holds and 'Other' admission types.

Table 8. Most Serious Crime Type – Black Prison Admissions

Admission Year	Violent Crime		Property		Drug Offense		Public Order Offense	
	N	%	N	%	N	%	N	%
2005	1,216	35.5%	785	22.9%	1,112	32.4%	316	9.2%
2006	1,330	36.4%	790	21.6%	1,185	32.5%	344	9.4%
2007	1,535	38.6%	781	19.6%	1,259	31.7%	402	10.1%
2008	1,471	40.4%	734	20.1%	1,071	29.4%	367	10.1%
2009	1,468	43.5%	638	18.9%	932	27.6%	335	9.9%
2010	1,449	43.1%	630	18.7%	922	27.4%	363	10.8%
2011	1,440	46.5%	614	19.8%	737	23.8%	305	9.9%
2012	1,350	46.0%	612	20.8%	665	22.6%	310	10.6%
2013	1,432	48.2%	595	20.0%	592	19.9%	351	11.8%
2014	1,353	47.4%	543	19.0%	582	20.4%	375	13.1%

Note: Admission numbers exclude temporary holds and 'Other' admission types.