



# Wisconsin Demographic Trends in Arrest Data

*2005-2014 Uniform Crime Reporting (UCR) Data*

Bureau of Justice Information and Analysis  
Wisconsin Department of Justice

*September 2015*





## Arrests by Sex

### Total Arrests by Sex

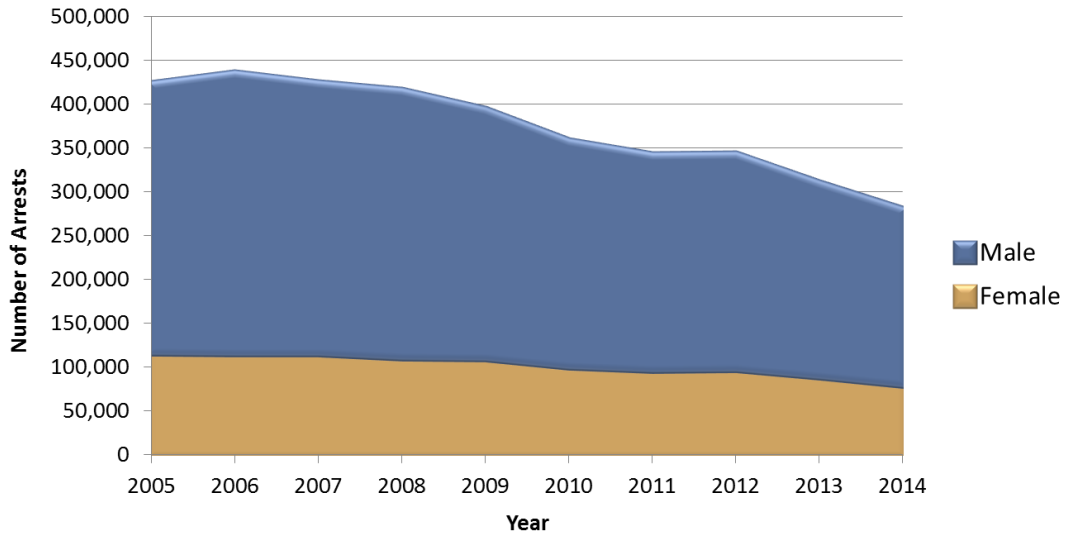
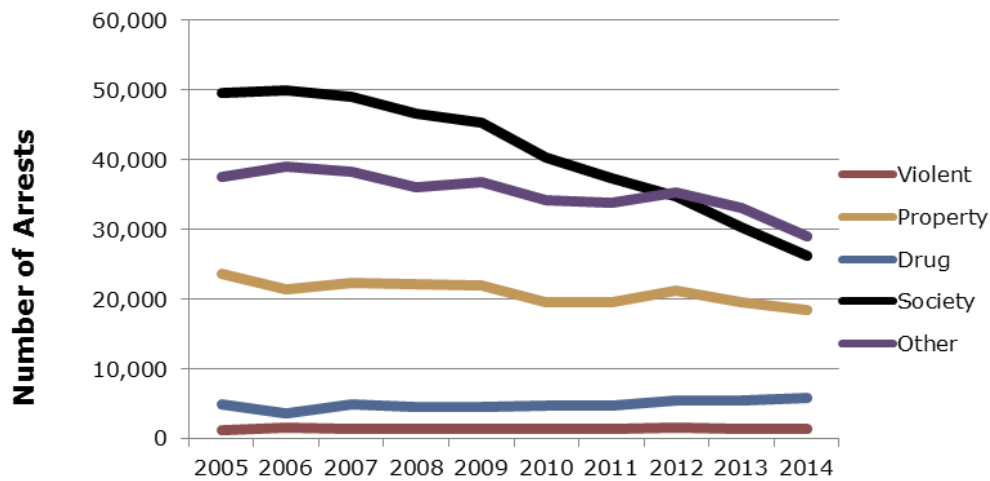


Table 1. Total Arrests by Sex (2005-2014)

	2005	2006	2007	2008	2009	2010	2011	2012	2013	2014
Female	116,818	115,370	115,989	110,571	109,813	100,258	96,860	98,222	89,616	80,608
Male	305,503	319,130	307,385	304,377	283,389	256,647	243,911	244,006	219,548	198,829
Total	422,321	434,500	423,374	414,948	393,202	356,905	340,771	342,228	309,164	279,437

### Female Arrests by Crime Category



Note: Male and female arrests are not on the same scale

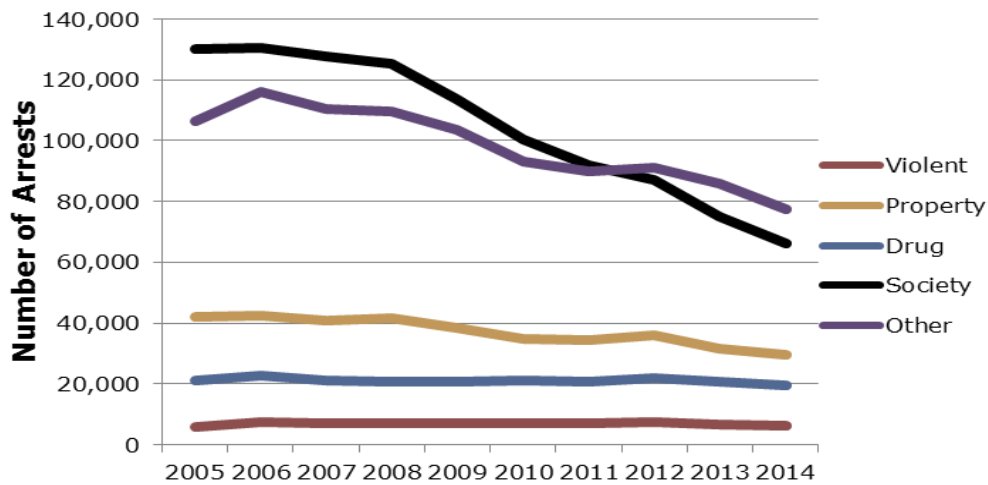




**Table 2. Total Female Arrests by Crime Category (2005-2014)**

	2005	2006	2007	2008	2009	2010	2011	2012	2013	2014
<b>Violent</b>	1,242	1,483	1,426	1,365	1,317	1,352	1,412	1,663	1,392	1,297
<b>Property</b>	23,647	21,413	22,246	22,060	21,901	19,586	19,544	21,217	19,550	18,336
<b>Drug</b>	4,966	3,557	4,964	4,524	4,558	4,747	4,747	5,373	5,474	5,742
<b>Society</b>	49,457	49,893	49,061	46,524	45,367	40,342	37,395	34,662	30,188	26,296
<b>Other</b>	37,506	39,024	38,292	36,098	36,670	34,231	33,762	35,307	33,012	28,937
<b>Total</b>	<b>116,818</b>	<b>115,370</b>	<b>115,989</b>	<b>110,571</b>	<b>109,813</b>	<b>100,258</b>	<b>96,860</b>	<b>98,222</b>	<b>89,616</b>	<b>80,608</b>

**Male Arrests by Crime Category**



Note: Male and female arrests are not on the same scale

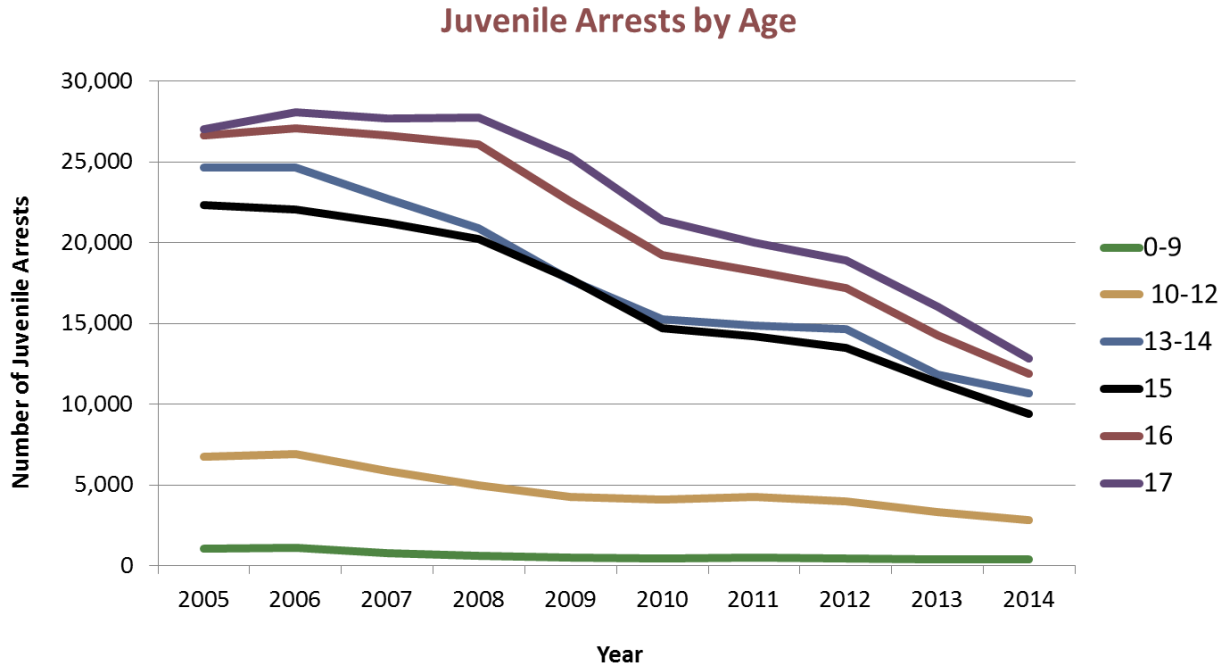
**Table 3. Total Male Arrests by Crime Category (2005-2014)**

	2005	2006	2007	2008	2009	2010	2011	2012	2013	2014
<b>Violent</b>	5,997	7,266	7,069	7,149	6,893	7,009	7,035	7,507	6,779	6,082
<b>Property</b>	42,120	42,626	41,027	41,587	38,326	34,722	34,441	36,054	31,406	29,765
<b>Drug</b>	21,032	22,646	20,931	20,729	20,701	21,148	20,778	22,044	20,560	19,417
<b>Society</b>	130,136	130,407	127,859	125,139	113,805	100,524	91,794	87,135	74,918	66,025
<b>Other</b>	106,218	116,185	110,499	109,773	103,664	93,244	89,863	91,266	85,885	77,540
<b>Total</b>	<b>305,503</b>	<b>319,130</b>	<b>307,385</b>	<b>304,377</b>	<b>283,389</b>	<b>256,647</b>	<b>243,911</b>	<b>244,006</b>	<b>219,548</b>	<b>198,829</b>





## Arrests by Age



**Table 4. Juvenile Arrests by Age (2005-2014)**

	2005	2006	2007	2008	2009	2010	2011	2012	2013	2014
<b>0-9</b>	1,062	1,111	780	599	522	451	486	449	382	380
<b>10-12</b>	6,740	6,895	5,850	4,961	4,273	4,081	4,267	3,976	3,305	2,791
<b>13-14</b>	24,648	24,671	22,716	20,920	17,697	15,231	14,866	14,661	11,801	10,674
<b>15</b>	22,314	22,036	21,202	20,234	17,747	14,714	14,181	13,462	11,321	9,384
<b>16</b>	26,646	27,108	26,635	26,088	22,572	19,262	18,237	17,217	14,252	11,898
<b>17</b>	27,033	28,062	27,698	27,756	25,292	21,400	20,032	18,913	16,022	12,838
<b>Total</b>	<b>108,443</b>	<b>109,883</b>	<b>104,881</b>	<b>100,558</b>	<b>88,103</b>	<b>75,139</b>	<b>72,069</b>	<b>68,678</b>	<b>57,083</b>	<b>47,965</b>





### Adult Arrests by Age Groups

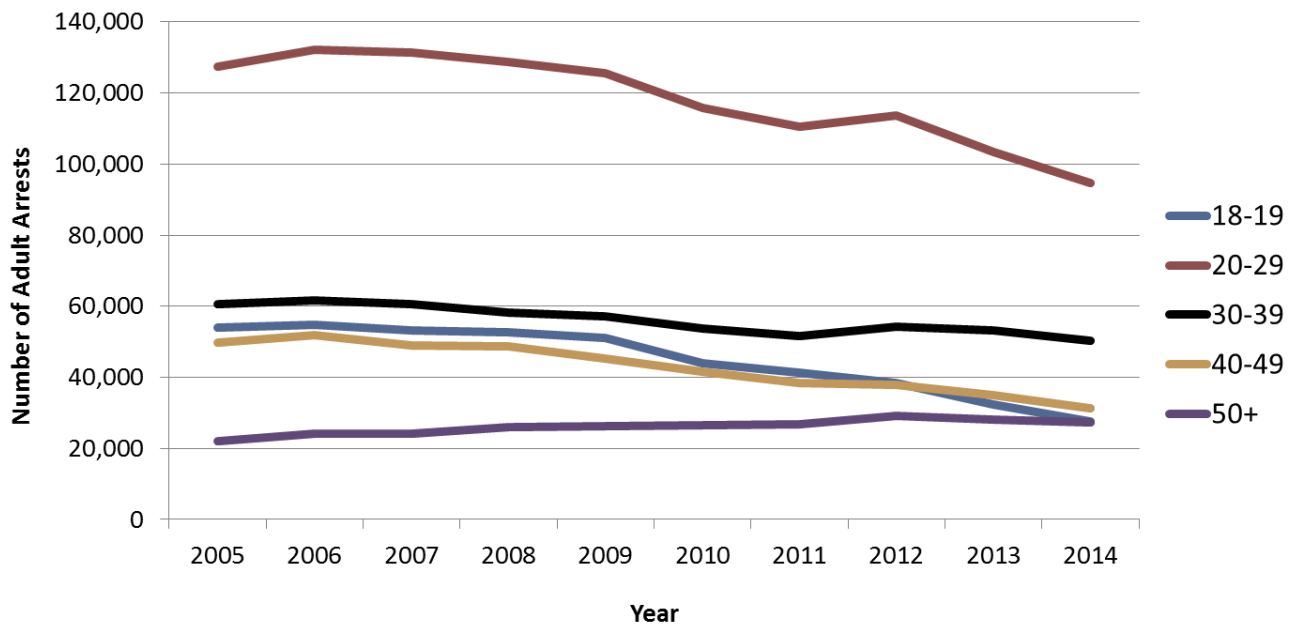


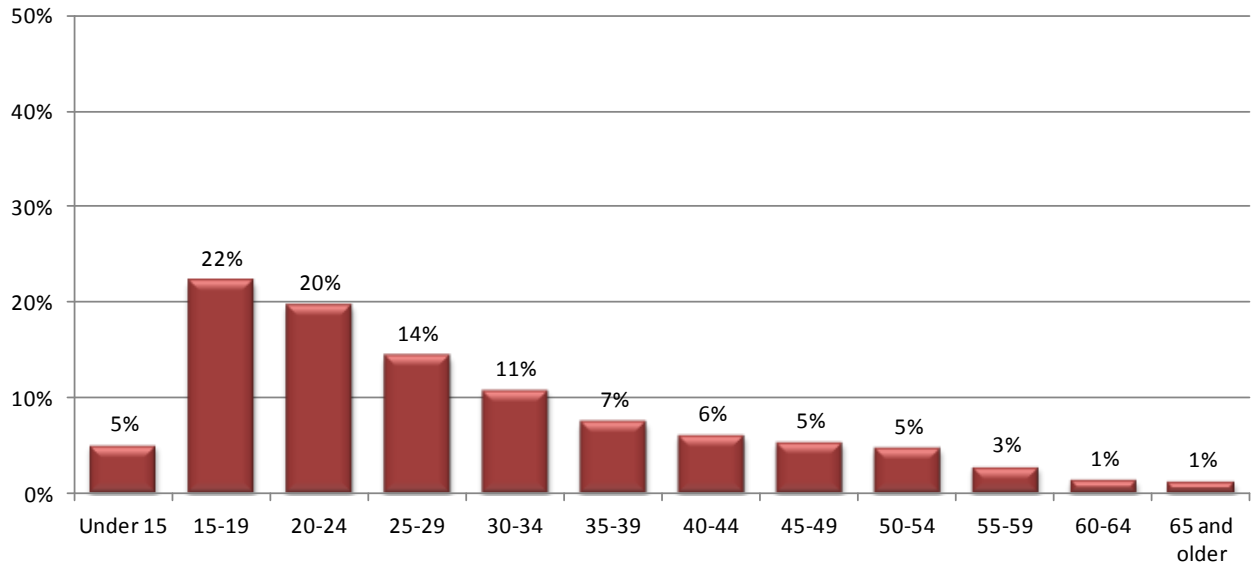
Table 5. Adult Arrests by Age Groups (2005-2014)

	2005	2006	2007	2008	2009	2010	2011	2012	2013	2014
18	27,443	27,256	27,270	26,576	25,616	21,768	20,229	19,162	15,933	13,953
19	26,549	27,436	25,939	25,985	25,398	22,187	20,970	19,293	16,401	13,727
20	24,626	24,377	23,739	22,788	22,317	20,346	18,836	18,565	15,351	13,390
21	17,223	17,972	17,771	16,843	15,987	15,072	14,382	14,658	12,762	11,029
22	15,594	15,306	15,729	14,966	14,230	13,094	12,831	13,396	11,925	10,610
23	13,365	13,616	13,288	13,711	13,190	11,778	11,385	11,899	10,929	10,177
24	12,380	12,574	12,546	11,823	11,996	11,130	10,462	10,819	10,236	9,578
25-29	44,156	48,342	48,404	48,695	47,735	44,301	42,611	44,473	42,223	39,893
30-34	31,026	31,852	31,532	30,963	31,118	30,239	30,117	32,143	31,633	29,793
35-39	29,561	29,902	28,972	27,377	26,055	23,532	21,478	22,076	21,452	20,637
40-44	29,100	29,289	27,414	25,802	23,593	21,542	19,877	19,879	18,524	16,720
45-49	20,698	22,527	21,687	22,889	21,705	20,122	18,601	17,972	16,511	14,654
50-54	11,234	12,110	12,188	13,420	13,399	13,401	13,555	14,471	13,597	12,969
55-59	5,644	6,346	6,417	6,764	6,866	6,907	7,116	7,625	7,708	7,588
60-64	2,666	2,926	2,887	3,107	3,179	3,436	3,419	3,812	3,728	3,616
65 and older	2,613	2,786	2,710	2,681	2,715	2,911	2,833	3,307	3,168	3,138
<b>Total</b>	<b>313,878</b>	<b>324,617</b>	<b>318,493</b>	<b>314,390</b>	<b>305,099</b>	<b>281,766</b>	<b>268,702</b>	<b>273,550</b>	<b>252,081</b>	<b>231,472</b>





### 2014 Arrests by Age Groups



**Table 6. Total Arrests by Age Group (2014)**

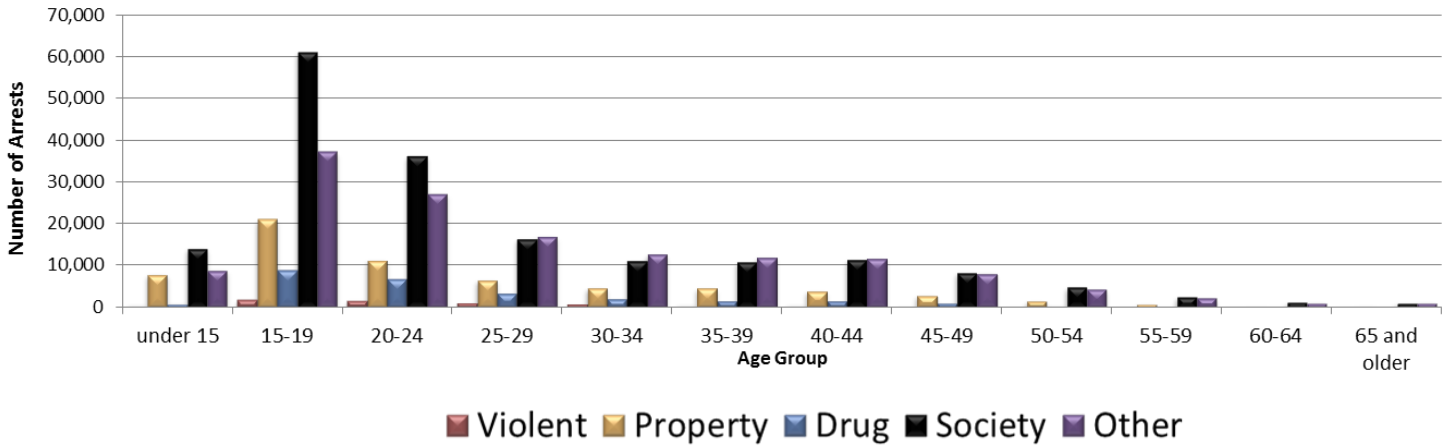
	N	%
<b>Under 15</b>	13,845	5%
<b>15-19</b>	61,800	22%
<b>20-24</b>	54,784	20%
<b>25-29</b>	39,893	14%
<b>30-34</b>	29,793	11%
<b>35-39</b>	20,637	7%
<b>40-44</b>	16,720	6%
<b>45-49</b>	14,654	5%
<b>50-54</b>	12,969	5%
<b>55-59</b>	7,588	3%
<b>60-64</b>	3,616	1%
<b>65 and older</b>	3,138	1%
<b>Total</b>	<b>279,437</b>	<b>100%</b>





# WI Demographic Trends in Arrest Data 2005-2014 UCR Data

## 2005 Arrests by Age and Crime Category

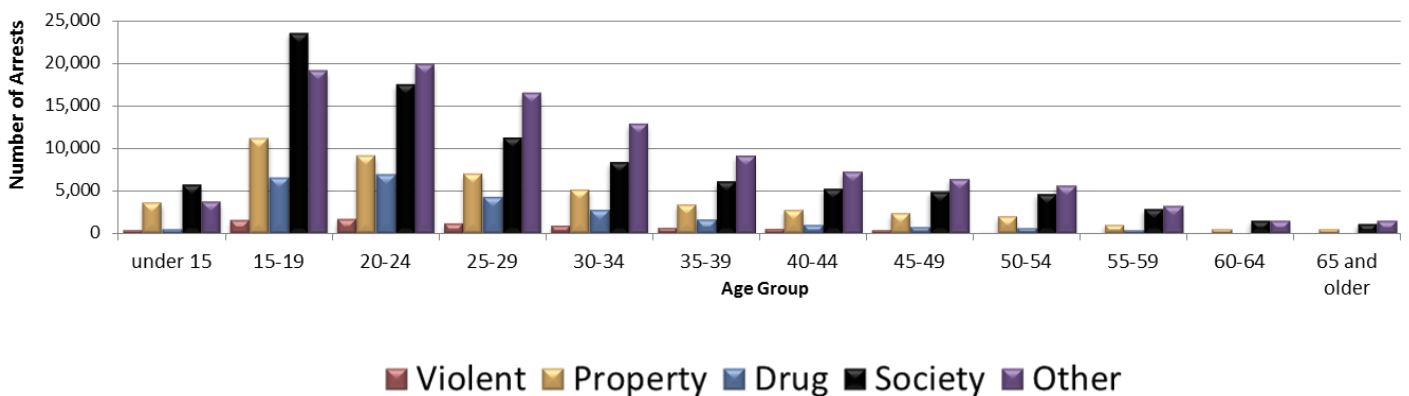


Note: Age charts are not on the same scale

**Table 7. Total Arrests by Age and Crime Category (2005)**

	under 15	15-19	20-24	25-29	30-34	35-39	40-44	45-49	50-54	55-59	60-64	65 and older
<b>Violent</b>	581	1,722	1,567	904	669	578	561	354	165	74	39	25
<b>Property</b>	7,898	21,061	11,318	6,526	4,620	4,580	3,942	2,866	1,520	702	336	398
<b>Drug</b>	874	8,781	6,696	3,253	1,921	1,435	1,450	939	428	146	43	32
<b>Society</b>	14,155	61,204	36,353	16,439	11,170	10,923	11,443	8,370	4,842	2,488	1,156	1,050
<b>Other</b>	8,942	37,217	27,254	17,034	12,646	12,045	11,704	8,169	4,279	2,234	1,092	1,108
<b>Total</b>	<b>32,450</b>	<b>129,985</b>	<b>83,188</b>	<b>44,156</b>	<b>31,026</b>	<b>29,561</b>	<b>29,100</b>	<b>20,698</b>	<b>11,234</b>	<b>5,644</b>	<b>2,666</b>	<b>2,613</b>

## 2014 Arrests by Age and Crime Category



Note: Age charts are not on the same scale



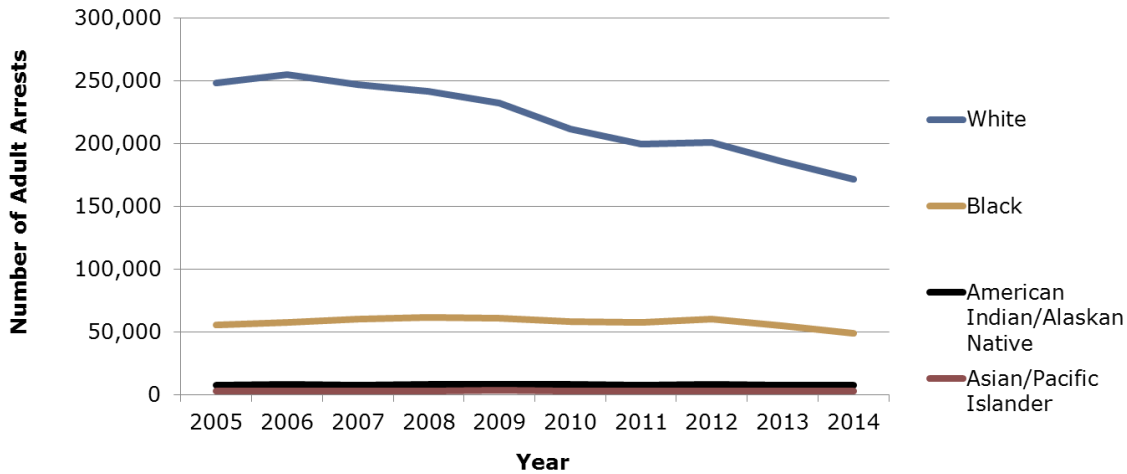


**Table 8. Total Arrests by Age and Crime Category (2014)**

	under 15	15-19	20-24	25-29	30-34	35-39	40-44	45-49	50-54	55-59	60-64	65 and older
<b>Violent</b>	394	1,520	1,560	1,142	858	577	479	372	259	126	49	43
<b>Property</b>	3,543	11,142	9,051	6,918	5,091	3,401	2,762	2,305	1,924	1,012	516	436
<b>Drug</b>	496	6,519	6,850	4,218	2,673	1,552	1,022	736	570	328	135	60
<b>Society</b>	5,694	23,557	17,475	11,167	8,322	6,033	5,213	4,862	4,642	2,849	1,415	1,092
<b>Other</b>	3,718	19,062	19,848	16,448	12,849	9,074	7,244	6,379	5,574	3,273	1,501	1,507
<b>Total</b>	<b>13,845</b>	<b>61,800</b>	<b>54,784</b>	<b>39,893</b>	<b>29,793</b>	<b>20,637</b>	<b>16,720</b>	<b>14,654</b>	<b>12,969</b>	<b>7,588</b>	<b>3,616</b>	<b>3,138</b>

**Arrests by Race**

**Adult Arrests by Race 2005-2014**



Note: Unknown race is excluded in this chart. Adult and juvenile arrests are not on the same scale.

**Table 9. Adult Arrests by Race (2005-2014)**

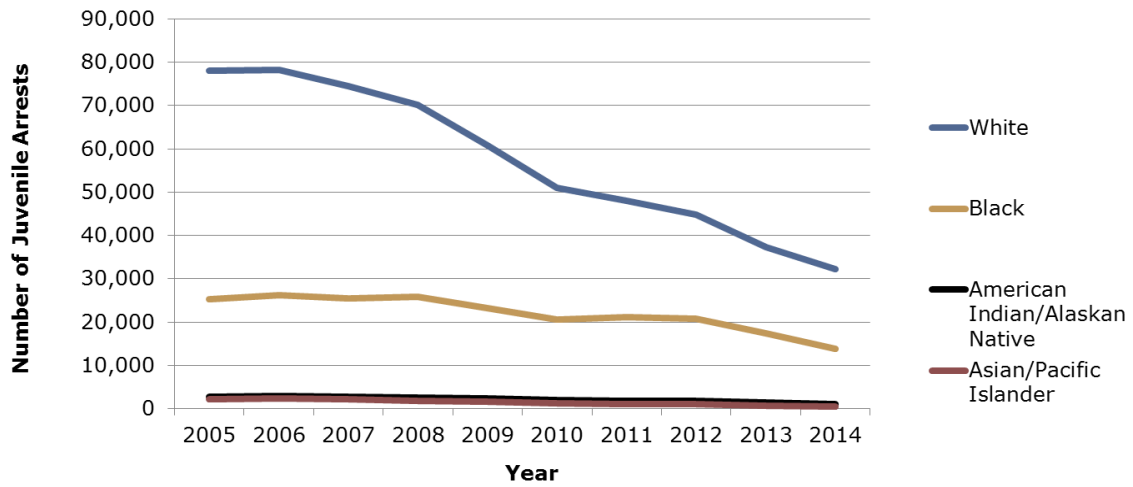
	2005	2006	2007	2008	2009	2010	2011	2012	2013	2014
<b>White</b>	248,240	255,081	247,190	241,389	232,096	211,712	199,702	201,101	185,970	171,781
<b>Black</b>	55,396	57,953	60,205	61,348	61,159	58,369	57,640	60,629	54,683	48,819
<b>American Indian/Alaskan Native</b>	7,499	8,285	7,902	8,537	8,510	8,163	7,915	8,091	7,919	7,430
<b>Asian</b>	2,743	3,298	3,197	3,118	3,317	3,057	3,072	3,299	3,059	2,928
<b>Unknown</b>	273	153	220	283	351	465	373	430	450	513
<b>Total</b>	<b>314,151</b>	<b>324,770</b>	<b>318,714</b>	<b>314,675</b>	<b>305,433</b>	<b>281,766</b>	<b>268,702</b>	<b>273,550</b>	<b>252,081</b>	<b>231,471</b>







**Juvenile Arrests by Race 2005-2014**



Note: Unknown race is excluded in this chart. Adult and juvenile arrests are not on the same scale.

**Table 10. Juvenile Arrests by Race (2005-2014)**

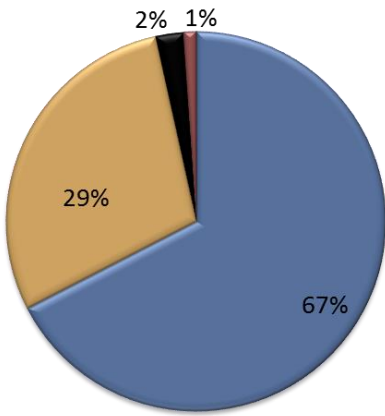
	2005	2006	2007	2008	2009	2010	2011	2012	2013	2014
<b>White</b>	78,140	78,217	74,543	70,270	60,856	50,980	48,009	44,759	37,364	32,200
<b>Black</b>	25,371	26,233	25,466	25,856	23,217	20,647	21,068	20,854	17,449	13,919
<b>American Indian/Alaskan Native</b>	2,704	3,020	2,723	2,619	2,422	2,066	1,768	1,816	1,363	1,131
<b>Asian</b>	2,228	2,413	2,149	1,813	1,603	1,280	1,057	1,031	707	512
<b>Unknown</b>	16	30	45	62	115	166	167	218	200	202
<b>Total</b>	<b>108,459</b>	<b>109,913</b>	<b>104,926</b>	<b>100,620</b>	<b>88,213</b>	<b>75,139</b>	<b>72,069</b>	<b>68,678</b>	<b>57,083</b>	<b>47,964</b>



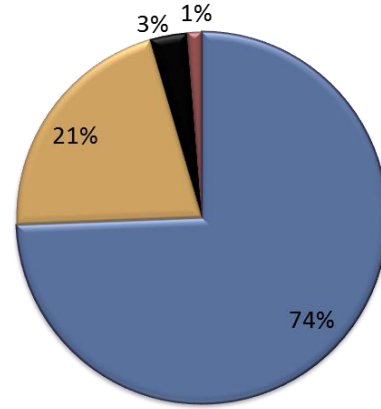


WI Demographic Trends in Arrest Data  
2005-2014 UCR Data

2014 Juvenile Arrests by Race



2014 Adult Arrests by Race



- White
- Black
- American Indian/Alaskan Native
- Asian/Pacific Islander

Note: Unknown race is excluded in these charts.

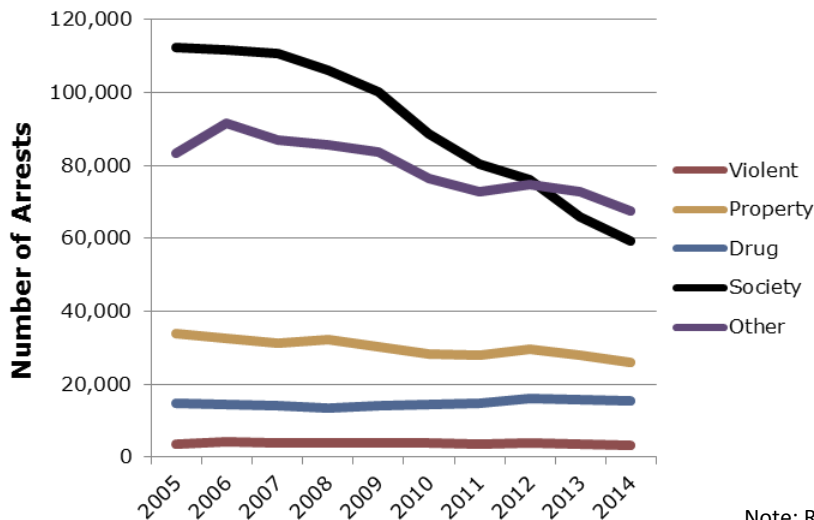
Table 13. Juvenile Arrests by Race (2014)

2014	
White	67%
Black	29%
American Indian/Alaskan Native	2%
Asian/Pacific Islander	1%

Table 14. Adult Arrests by Race (2014)

2014	
White	74%
Black	21%
American Indian/Alaskan Native	3%
Asian/Pacific Islander	1%

White Adult Arrests by Crime Category



Note: Race charts are not on the same scale

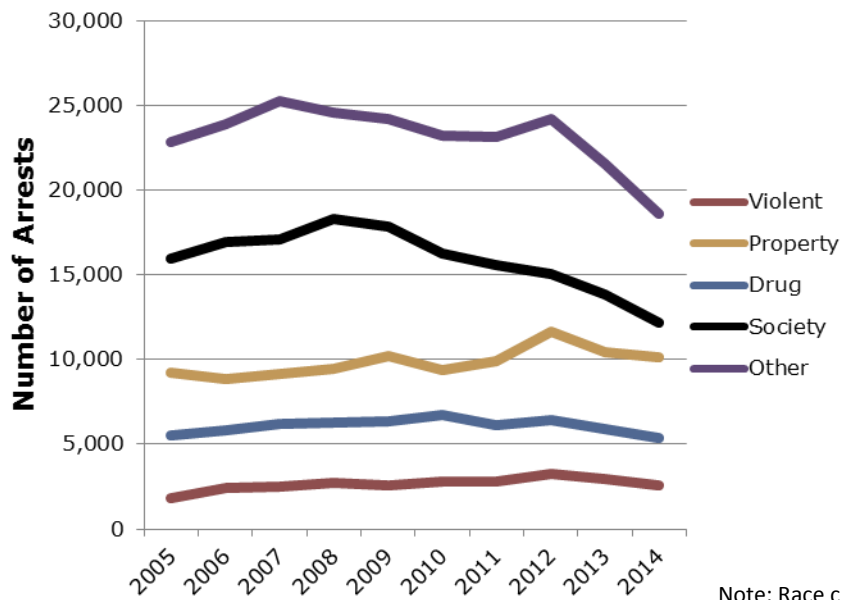




**Table 11. White Adult Arrests by Crime Category (2005-2014)**

	2005	2006	2007	2008	2009	2010	2011	2012	2013	2014
<b>Violent</b>	3,605	4,169	3,798	3,797	3,897	3,790	3,757	4,081	3,557	3,279
<b>Property</b>	33,985	32,679	31,448	32,148	30,177	28,360	28,046	29,649	27,957	26,124
<b>Drug</b>	14,836	14,659	14,172	13,673	14,090	14,393	14,792	16,314	15,785	15,535
<b>Society</b>	112,452	111,834	110,749	105,999	100,188	88,763	80,381	76,311	65,826	59,242
<b>Other</b>	83,362	91,740	87,023	85,772	83,744	76,406	72,726	74,746	72,845	67,601

**Black Adult Arrests by Crime Category**



Note: Race charts are not on the same scale

**Table 12. Black Adult Arrests by Crime Category (2005-2014)**

	2005	2006	2007	2008	2009	2010	2011	2012	2013	2014
<b>Violent</b>	1,792	2,413	2,522	2,732	2,562	2,791	2,831	3,261	2,926	2,561
<b>Property</b>	9,251	8,829	9,162	9,444	10,243	9,345	9,882	11,655	10,458	10,103
<b>Drug</b>	5,517	5,834	6,173	6,315	6,356	6,757	6,163	6,439	5,866	5,369
<b>Society</b>	15,975	16,955	17,084	18,314	17,820	16,269	15,588	15,037	13,869	12,179
<b>Other</b>	22,861	23,922	25,264	24,543	24,178	23,207	23,176	24,237	21,564	18,607





# WI Demographic Trends in Arrest Data

## 2005-2014 UCR Data

### Notes and Disclaimers:

1. These data reflect the number of adult and juvenile arrests reported by Wisconsin law enforcement agencies under the Uniform Crime Reporting (UCR) program from 2005 to 2014, including both summary and incident-based reporting agencies.
2. Arrests in the UCR program are defined as: All persons processed by arrest (booking), citation, or summons (when served by an officer) for committing an offense in its jurisdiction.
3. Arrest counts are based on the number of bookings/citations for the most serious charge reported to the UCR program, rather than the number of charges.
4. Definitions of each arrest category can be found in the FBI UCR reporting user manual, which is accessible from this web link <https://www.fbi.gov/about-us/cjis/ucr/ucr-program-data-collections>
5. Ethnicity (Hispanic/Not Hispanic) is excluded as it is not currently collected in both summary-based and incident-based UCR data.
6. Totals across all categories (race, sex, age, crime type) may differ slightly due to missing or unknown values.
7. For the arrest analysis, the following offenses are included in each category:

Violent	Murder
	Forcible Rape
	Robbery
	Aggravated Assault
Property	Burglary
	Theft
	Motor Vehicle Theft
	Arson
	Forgery
	Fraud
	Embezzlement
	Stolen Property
	Vandalism
	Drug
Marijuana Sales	
Synthetic Narcotic Sales	
Other Drug Sales	
Opium/Cocaine Possession	
Marijuana Possession	
Synthetic Narcotic Possession	
Other Drug Possession	
Society	Weapons
	Prostitution
	Sex Offenses
	Gambling Violations
	Driving While Intoxicated
	Liquor Laws
	Disorderly Conduct
	Vagrancy
	Curfew and Loitering
	Runaways
Other	Negligent Manslaughter
	Other Assaults
	Family Offenses
	All Other (Except Traffic)

